

Kiwi I

STEEL BUILDING SPECIALISTS
NATIONWIDE SINCE 1982



DESIGN & ENGINEERING
IN-HOUSE INSTALLATION
SINGLE STORY
MULTI STORY



FIT-OUTS
CONVERSIONS
RE-ROOFING SYSTEMS
METAL BUILDINGS

TABLE OF CONTENTS

AWARD WINNING DESIGN	1
SINGLE STORY	2
MULTI STORY	4
CONVERSION & MEZZANINE SYSTEMS	6
R.V. CANOPIES	8
R.V. BUILDINGS & STORAGE	10
EXTERIOR WALL & SIDING SYSTEMS	12
COMPLETED PROJECTS	14
STRUCTURAL STEEL	16
PRIMARY ELEMENTS	18
ROOF PANELS	20
ROOF INSULATION	21

NOTES



NATIONWIDE SALES OFFICE
28177 KELLER ROAD, MURRIETA, CA 92563
PHONE - 951-301-8975
FAX - 951-301-4096
TOLL FREE - 877-465-4942

EAST COAST SALES - TOLL FREE - 888-777-5494
FAX - 877-888-5494

EMAIL - SALES@KIWICONSTRUCTION.com
WEBSITE - www.KIWICONSTRUCTION.com

kiwi II

STEEL BUILDING SPECIALISTS
NATIONWIDE SINCE 1982



LET KIWI II DESIGN YOUR NEXT
AWARD WINNING PROJECT



COLORADO SPRINGS, CO



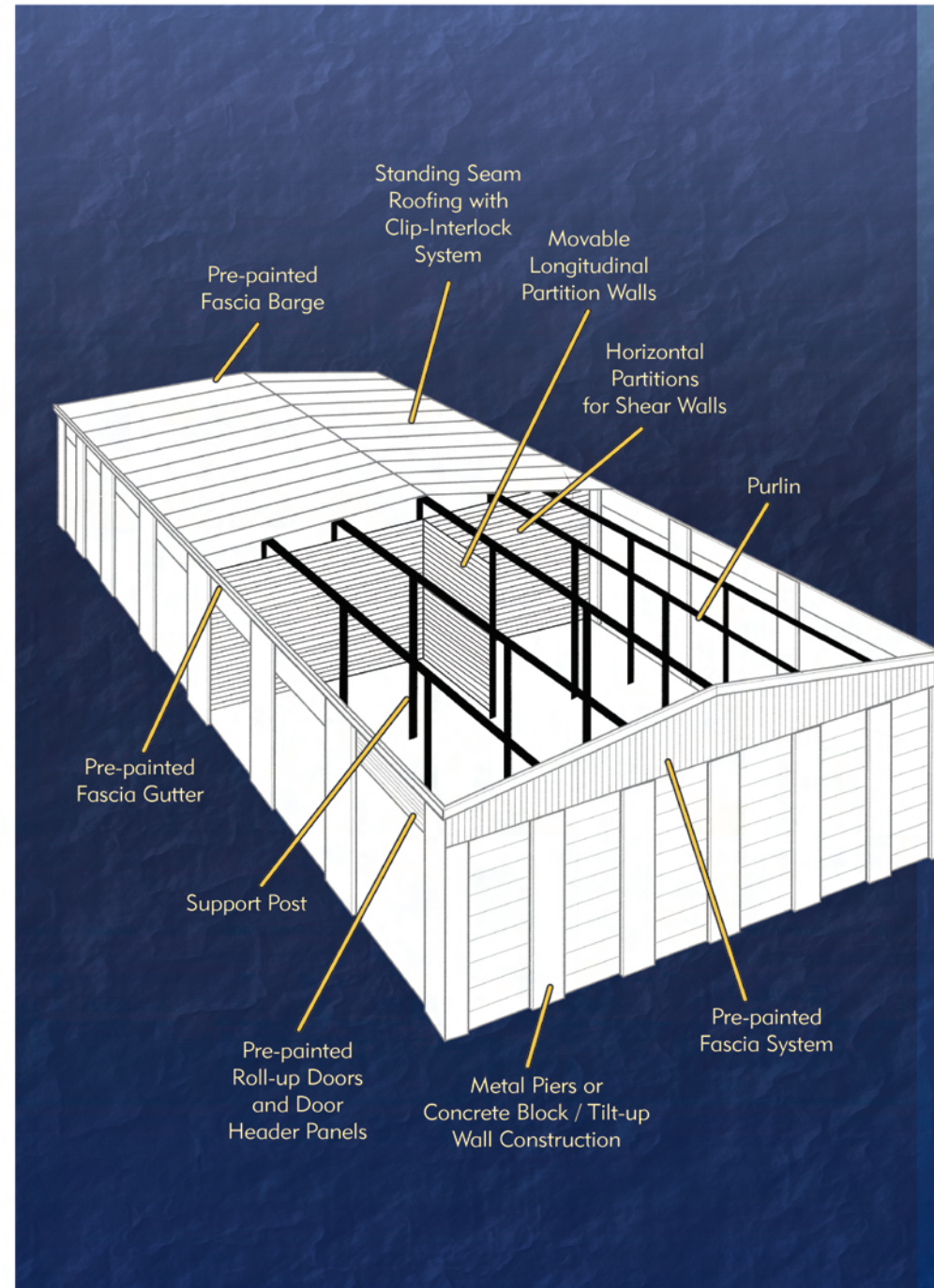
BELLEVUE, WA



PHOENIX, AZ

SINGLE STORY

Designed to offer the developer a top quality, light gauge steel building system at an economical price, our post & purlin system maximizes light gauge framing, allowing greater cost savings. Hallway systems, wide bay spacings, and tall eave heights can be integrated to provide the flexibility to meet different market demands.



FEATURES

- Variable gauge standing seam roofing, maximizing structural framing for greater design flexibility
- Variable gauge Galvalume® partitions act as shearwalls in horizontal applications
- Designs for all states and local codes - including high wind areas in coastal regions
- Compatibility with virtually any exterior finish, such as masonry block, tilt-up construction, brick or synthetic finishes like stucco
- Coordinate trim with pre-finished gutters, downspouts and barge
- All products carry a minimum 20 year material warranty

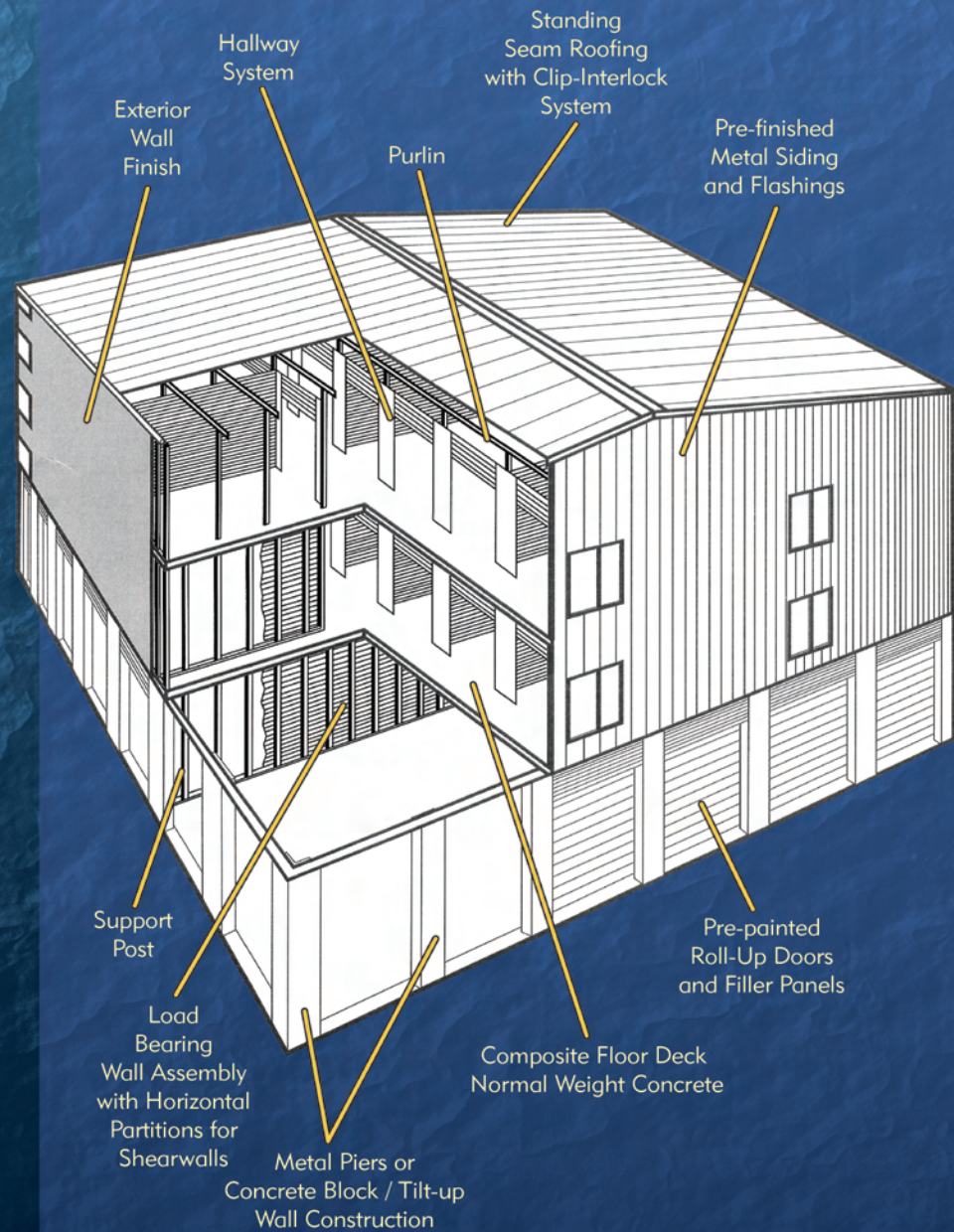
OPTIONAL FEATURES

- Three-piece pier system with pre-painted pier caps
- Pre-painted siding panels and fascia systems
- Separation walls and roof insulation for maximum climate control efficiency
- High pitched roofs for increased visibility



FEATURES

- Floor plans can be designed to your custom unit mix layout
- Second floor slabs comply with codes for 125 lb. floor load required for storage with normal weight concrete
- Floor slabs can meet U.L. ratings for fire safety requirements
- Climate control features and hallway systems are easily integrated into the designs
- Structures can be designed for seismic and high wind regions
- 10 x 10 clear span system option for multi-story buildings
- Variable gauge Galvalume® partitions act as shearwalls in horizontal applications
- Auxiliary loads are designed to accommodate sprinkler systems, mechanical equipment and solar systems
- Compatibility with virtually any exterior finish, such as pre-finished metal panels, insulated wall panels, masonry block, tilt-up construction, brick or synthetic finishes like stucco
- Coordinate trim with pre-finished gutters, downspouts and barge
- All products carry a minimum 20 year material warranty



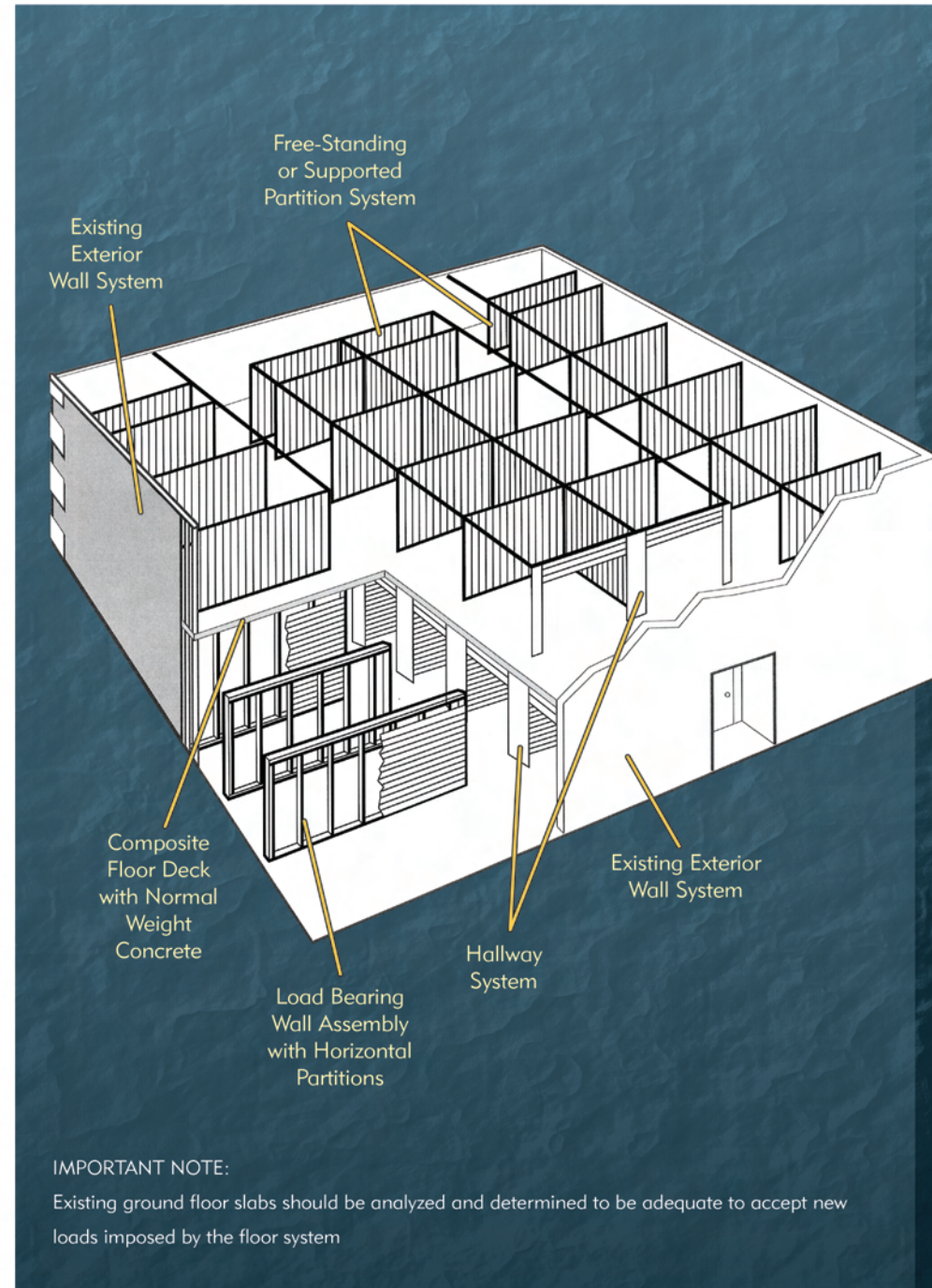
MULTI-STORY

Designed to offer the developer an economical way to customize their above ground buildings. Kiwi II's load bearing wall system maximizes light gauge framing to reduce the cost of multi-story construction. Multi-story buildings can be architecturally designed to enhance appearances, provide high visibility and increase building values.



CONVERSION & MEZZANINE SYSTEMS

Kiwi II offers the load bearing floor system as an economical way to convert existing buildings into multi-floor storage space. This system can be integrated to work with virtually any type of existing building structure.



IMPORTANT NOTE:

Existing ground floor slabs should be analyzed and determined to be adequate to accept new loads imposed by the floor system

FEATURES

- Floor plans can be designed to your custom unit mix layout
- Second floor partitions can be free-standing design for greater flexibility or fixed walls with structural supports
- Partitions are variable gauge Galvalume®
- Climate control features can be easily integrated into designs
- Compatible with all hallway and door systems
- Can be designed to work with practically any existing building structure such as tilt wall, metal building, masonry and conventional
- Second floor slabs can meet U.L. rating for fire safety requirements
- Second floor slabs comply with codes for 125 lb. floor load required for storage with normal weight concrete
- Auxiliary loads are designed to accommodate sprinkler and mechanical systems

OUR RETROFIT ROOF SYSTEM

Adaptable to virtually any building structure, retro-fit roofs can be installed over existing roofs for a practical and architecturally enhancing solution to problem leaks



RV / Boat canopies are constructed from Galvalume® materials. Clearspan posts, beams, and purlin products are of variable gauge.

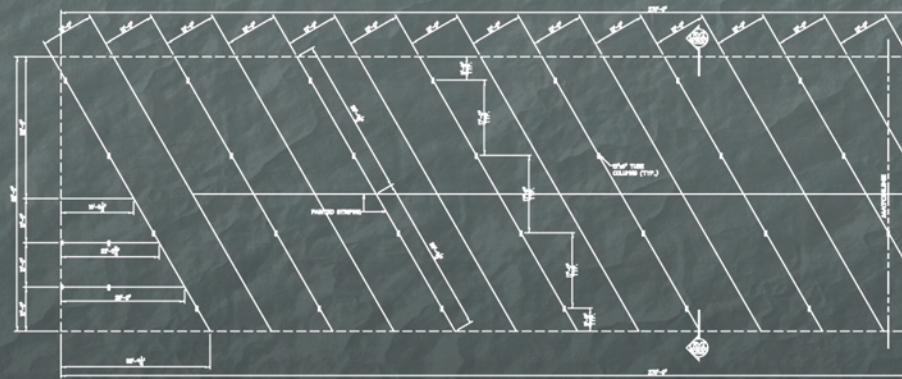
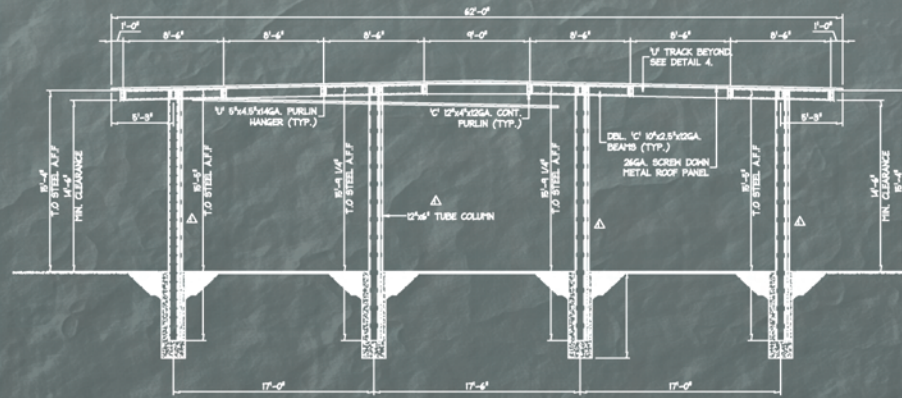
Clear framing heights vary to underside of canopies: 8ft, 10ft, 12ft and 14ft.

Includes screw down roof system and pre-painted trim products.

Canopies are land intensive but demand is on the rise due to increasing regulation prohibiting parking on residential streets.

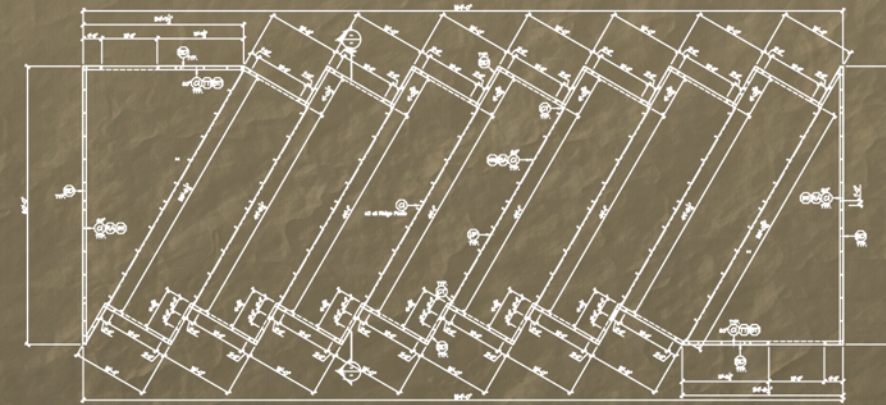
Canopies can be integrated as mixed use on current or new projects.

Canopies can be designed to accommodate solar panels.



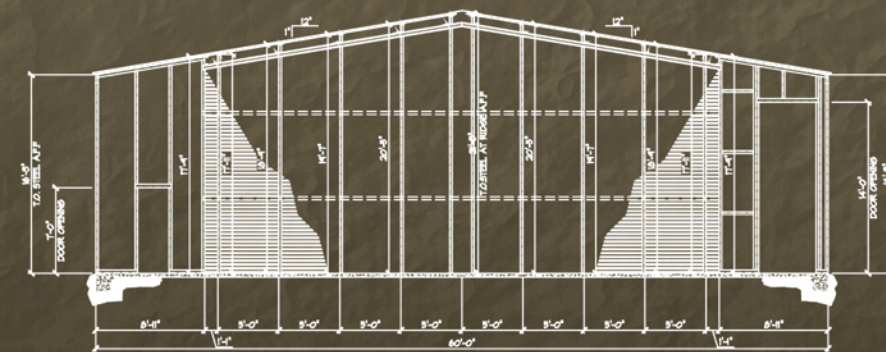
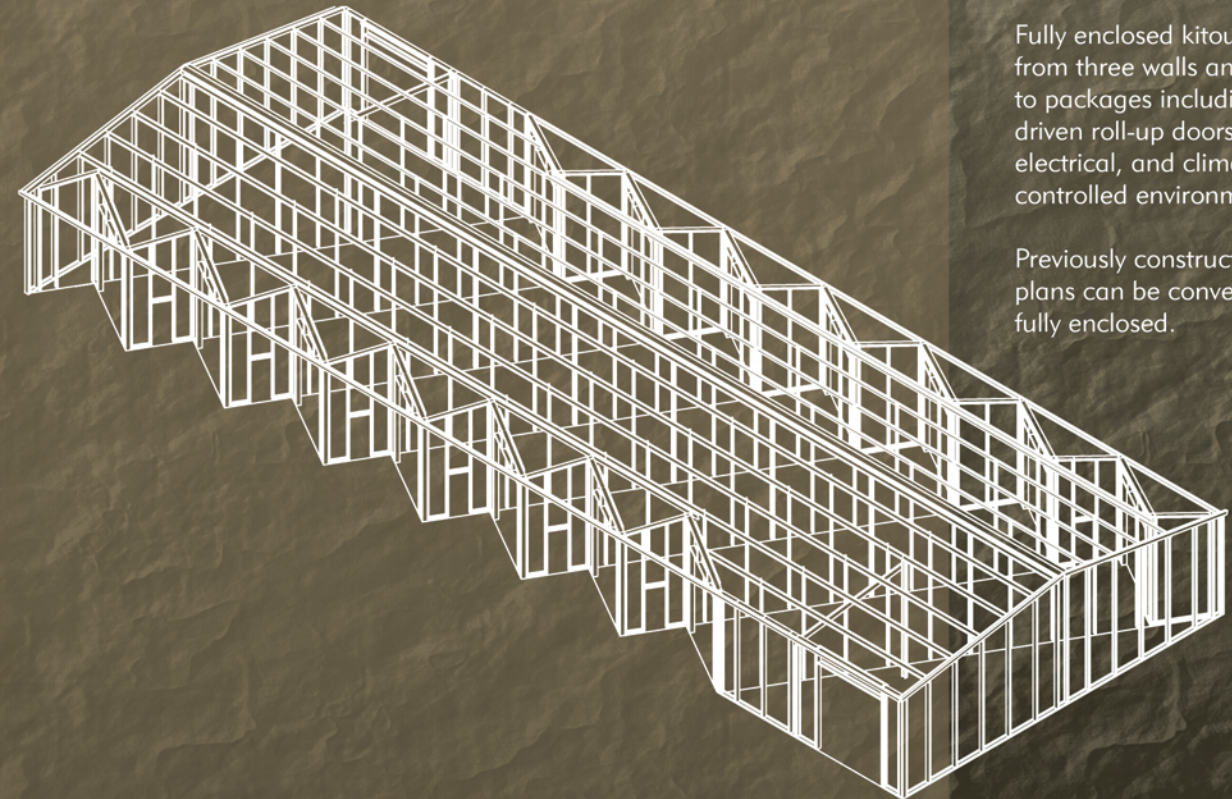
R.V. BUILDINGS & STORAGE

Kiwi II RV / Boat Storage solutions range from open air canopies to completely enclosed units featuring the ultimate in security and weather protection. Units are placed on 45° - 60° angles to the drive area dependant on width and land available.



Fully enclosed kitouts range from three walls and a roof to packages including remote driven roll-up doors, electrical, and climate controlled environments.

Previously constructed open plans can be converted to fully enclosed.



Depending on target market and clientele, RV / Boat storage can be designed to supply a wide variety of options including building height and width, door height and width, and unit width and depth.

RV / Boat storage demand is on the rise due to increasing regulation prohibiting parking on residential streets.





EXTERIOR WALL & SIDING SYSTEMS



- 1. Exterior facelift included horizontal insulated wall panels integrated with canopies, tower elements, and windows
- 2. Vertical insulated wall panels with brick and stucco bands
- 3. Standard metal panel system with wall insulation, storefronts, towers, and structural canopies
- 4 & 5. Exterior facelifts - Before & After

Kiwi II offers multiple exterior finish options for our storage and pre-engineered building types. With planning departments requiring more retail-looking buildings, instead of the "metal panel look", we have multiple options to integrate cost effective metal panels with bricks or stucco, adding canopies and metal bands for architectural features. We also have a range of insulated wall panels (installed vertically or horizontally to create a finish planner's approval). Insulated wall panels have R values from R16 - R38.



COMPLETED PROJECTS





STRUCTURAL STEEL



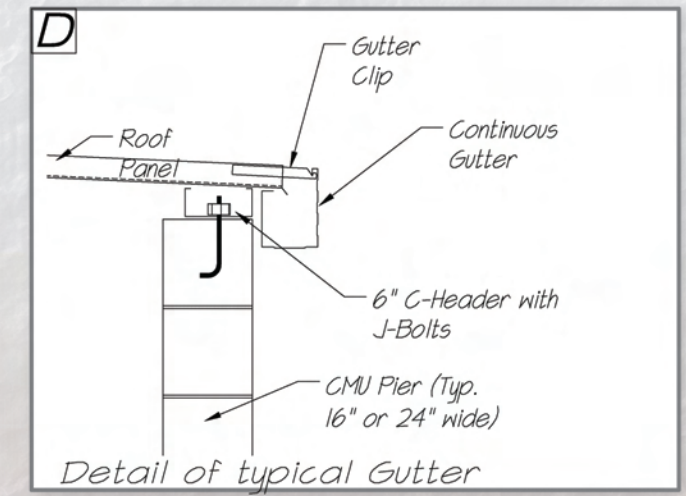
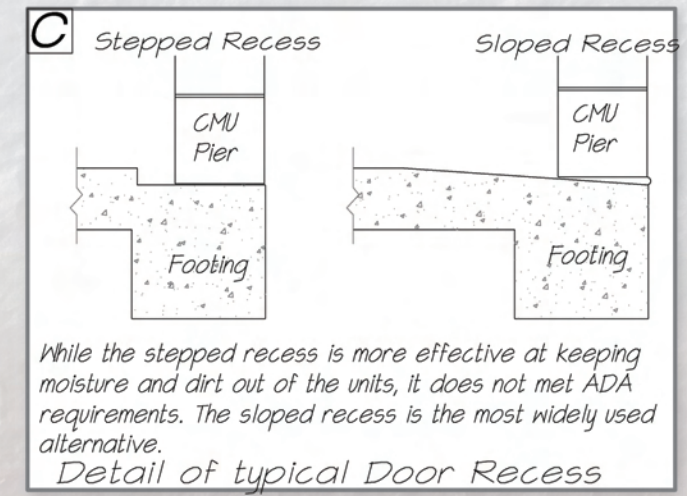
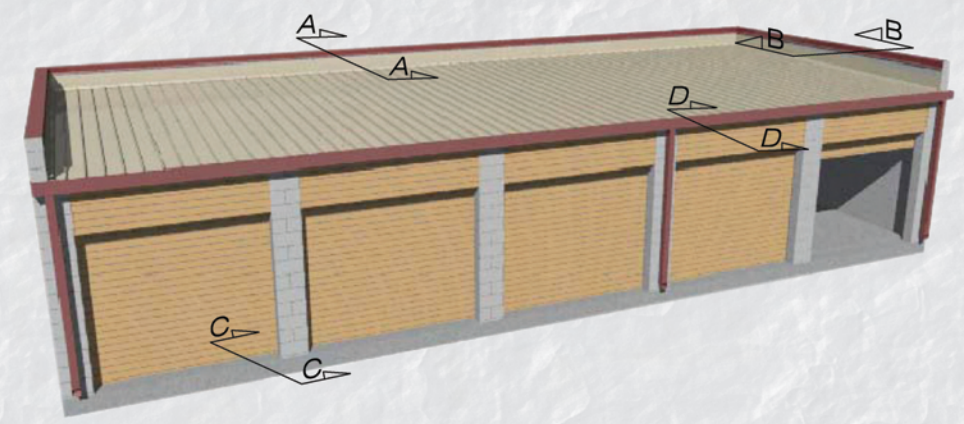
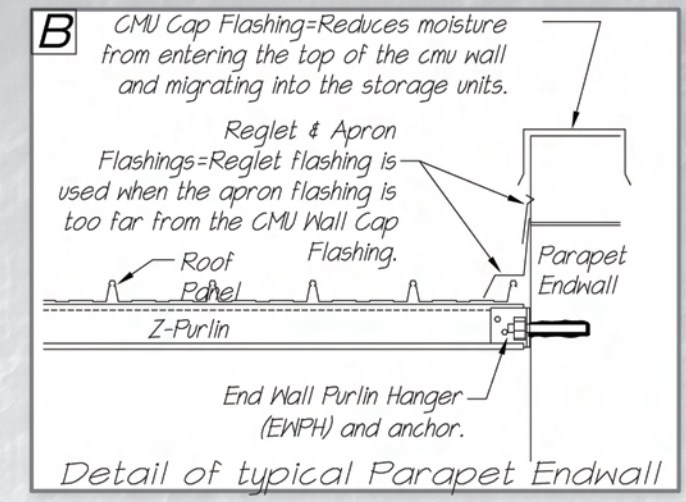
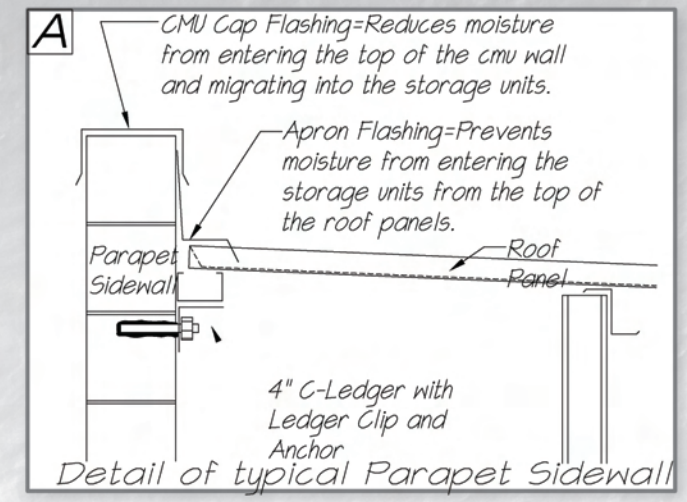
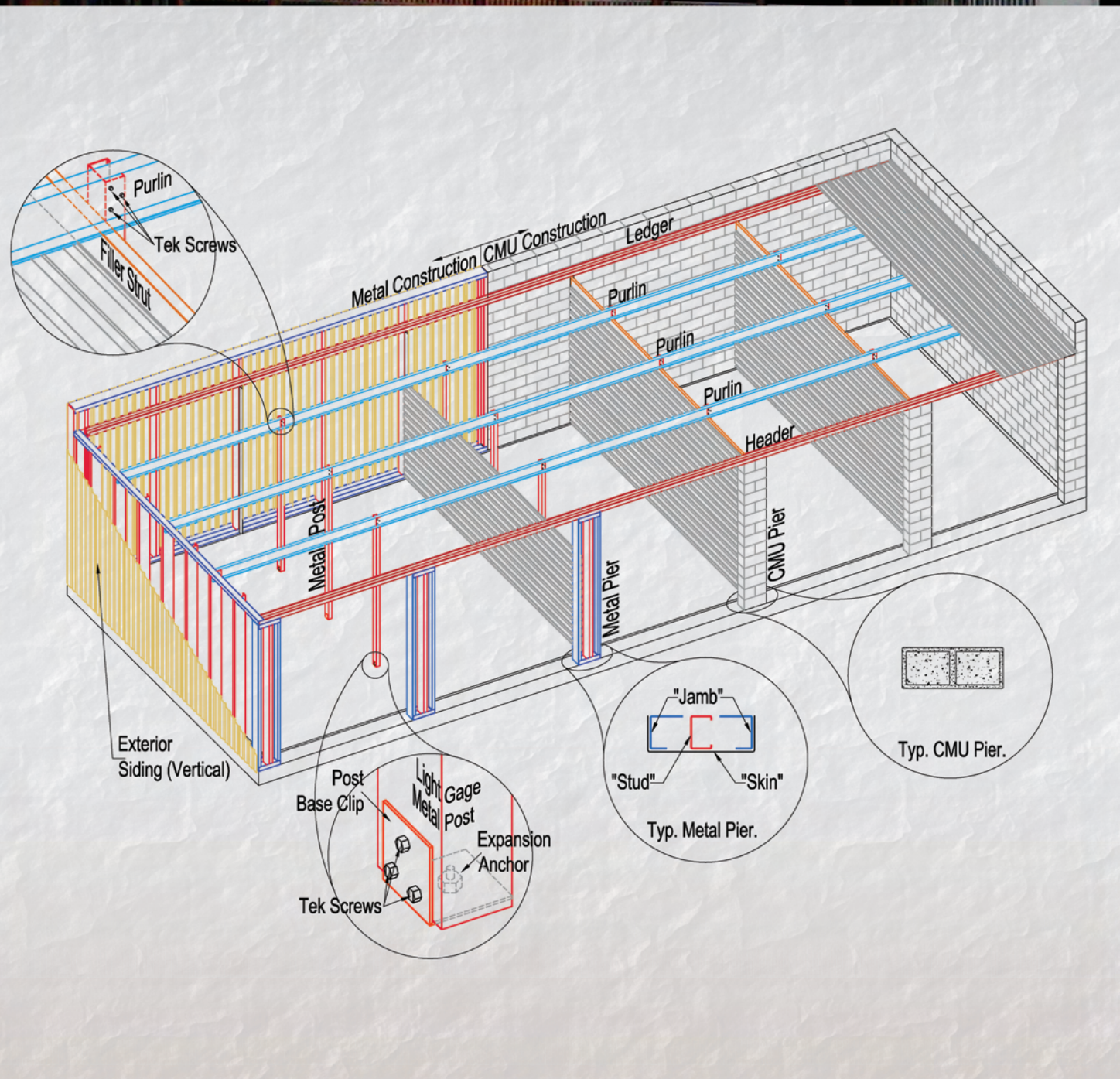
Kiwi II offers Structural Steel and Pre-Engineered Building System Packages that include:

- Structural Beams and Tube Posts
- Stair Systems
- Structural Canopies
- Pre-Engineered Buildings for various commercial uses, such as:
 - Aircraft Hangers
 - Churches
 - Manufacturing
 - Warehouses
 - Agricultural



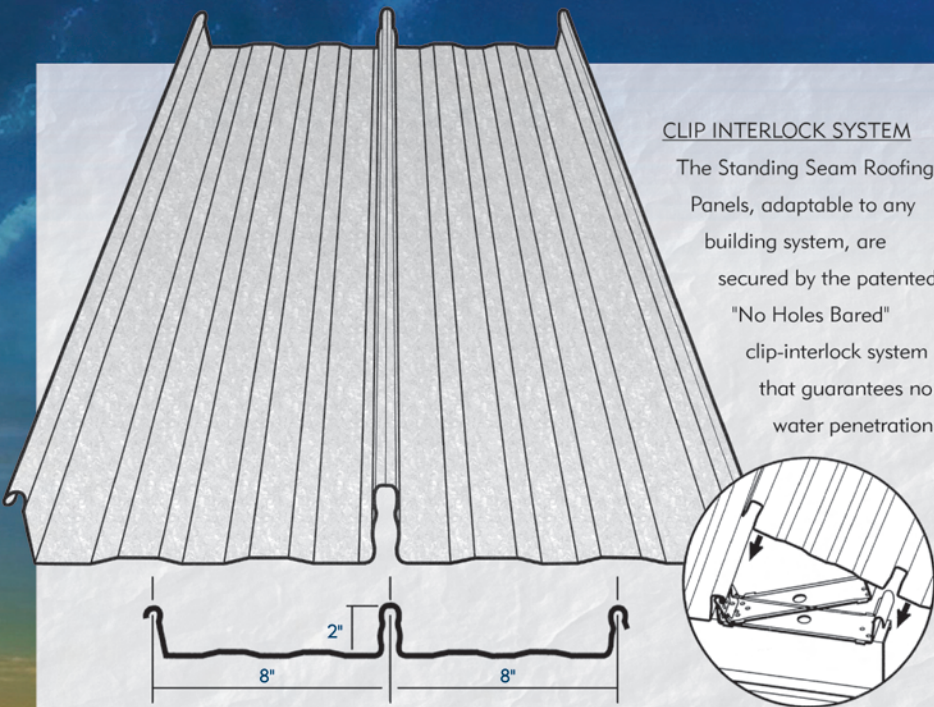
PRIMARY ELEMENTS

Typical construction for light gauge metal buildings



ROOF PANELS

Continuous, concealed fastener roofing and siding system for commercial and industrial applications



CLIP INTERLOCK SYSTEM

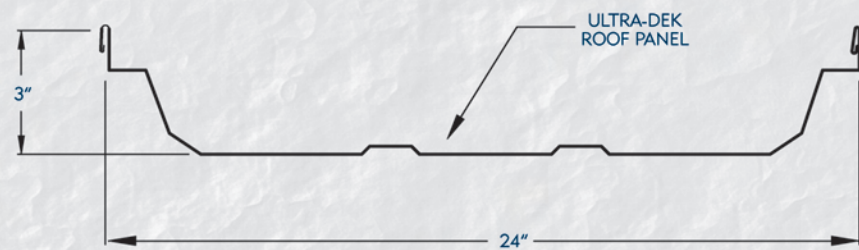
The Standing Seam Roofing Panels, adaptable to any building system, are secured by the patented "No Holes Bared" clip-interlock system that guarantees no water penetration.

FEATURES

- The Standing Seam Roof Panel features a positive internal locking clip combined with precise rib snap-locking action at laps
- Clips do not interrupt the locking action of the lapping ribs, thus resisting wind uplift and weather penetration. Each panel locks tightly over preceding panel along full length of rib
- Patented gauge Clip-Interlock System secures panels with no exposed penetrations
- Panel lengths up to 50 feet are available at no extra shipping cost
- Panels are available in a wide variety of colors and finishes
- Matching Galvalume® pre-painted finishes for flashing and flat stock are available
- All products carry a minimum 20 year material warranty

TESTING AND CERTIFICATION

- Wind Uplift-UL 90 Classification
- ICC Report available
- Dade County, Florida approved
- Air Infiltration: Panel to meet air infiltration standards as tested
- Water Penetration: Panel to meet water penetration standards as tested

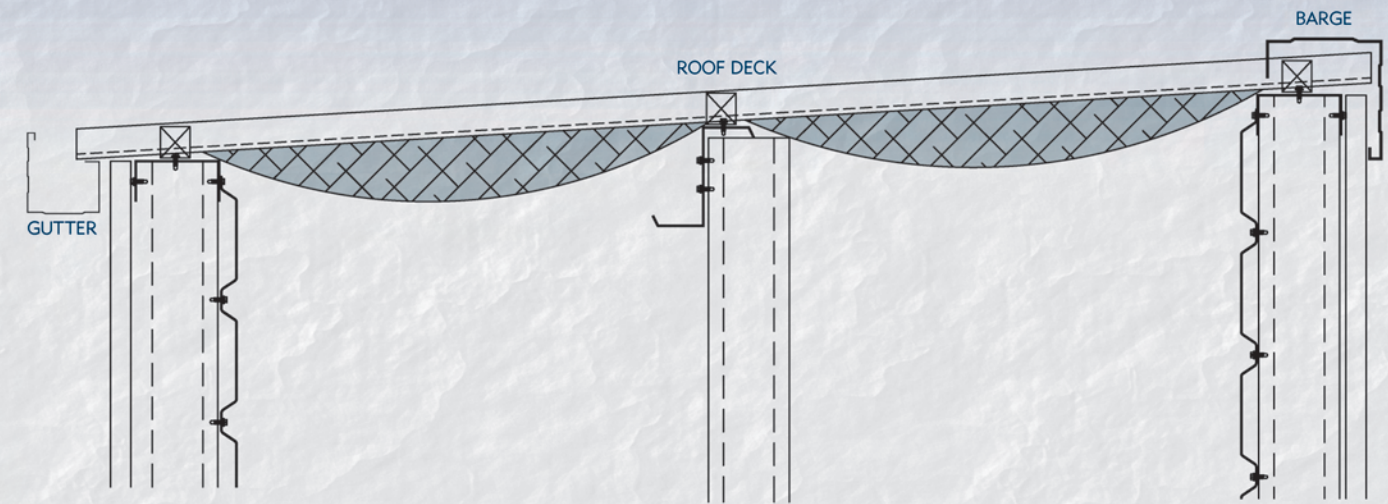


ROOF PANEL NOTES

- Roof Panels meet local ICBO and as specified on Architectural plans
- Roof Panels, trim, flashings and base material is galvanized per ASTM A-792-83
- Pre-painted material carries a 20 year warranty
- Roof panel clips are 18GA with a G-90 or galvanized coating

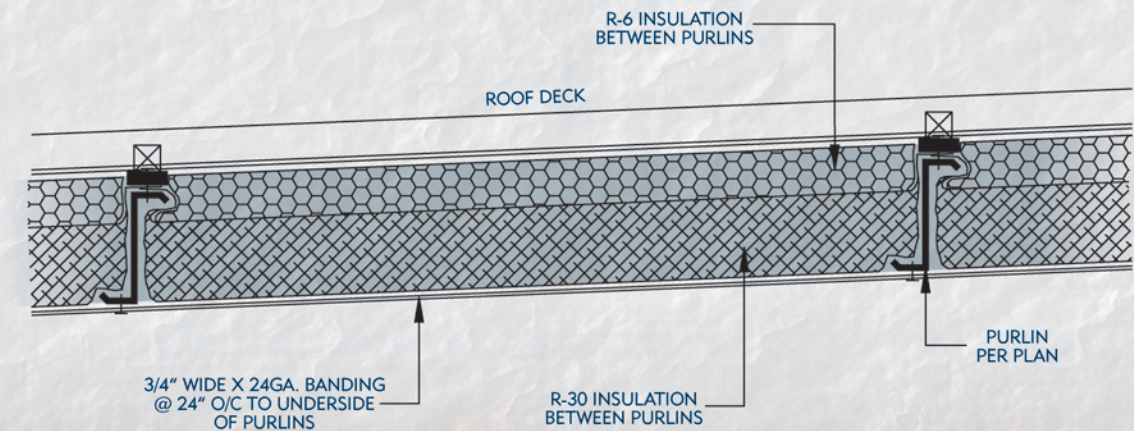
ROOF INSULATION

Complete roof insulation systems for commercial and industrial applications



STANDARD INSULATION

Insulation is compressed over purlin as shown



BANDED INSULATION SYSTEM

With new Energy codes being adopted, this system achieves full "R" values as required. R Values range from R25 - R38 are being required per state codes.



kiwi I

DESIGN & ENGINEERING

IN-HOUSE INSTALLATION

SINGLE STORY CONSTRUCTION

MULTI STORY CONSTRUCTION

FIT-OUTS / CONVERSIONS

RE-ROOFING SYSTEMS

METAL BUILDINGS



NATIONWIDE SALES OFFICE

877-465-4942

www.KIWICONSTRUCTION.com